

Folk Art

Untrained Artists around the world are building sites amazingly similar to the work of Grover Cleveland Thompson. They tend to use brightly colored broken china, interesting stones, concrete and lots of imagination!

Along with the preservation of the Rock Garden, Marion Blake is developing an archive where information can be found about other sites.

If you should know of a similar site in the states or abroad, please contact Marion Blake. If you want more information.

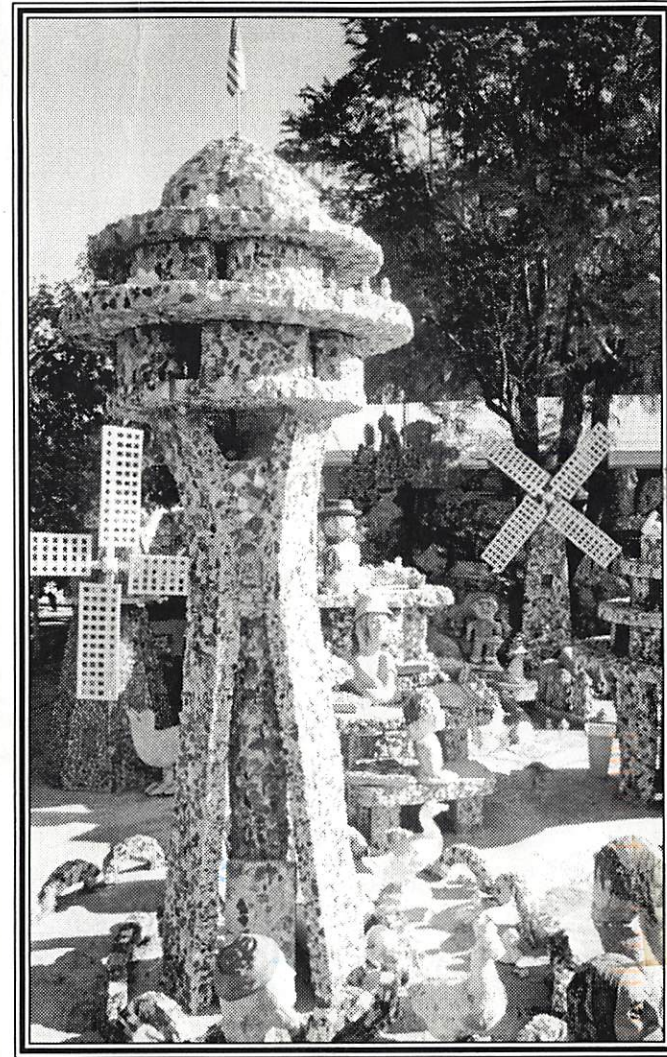
Please call:

(602) 997-4627

Bud & Val Stone
258 S. Rosford Drive
Beverly Hills
Ca. 90212



Sunnyslope Rock Garden
10023 N. 13th Place
Phoenix, AZ
85020



Sunnyslope Rock Garden

10023 N. 13th Place
Phoenix, AZ 85020

Created by
Grover Cleveland Thompson



The Sunnyslope Rock Garden is composed of three major Art Installations. Incorporated within these sections are over 50 structures and about 50 people. There are seven windmills and seven fountains.

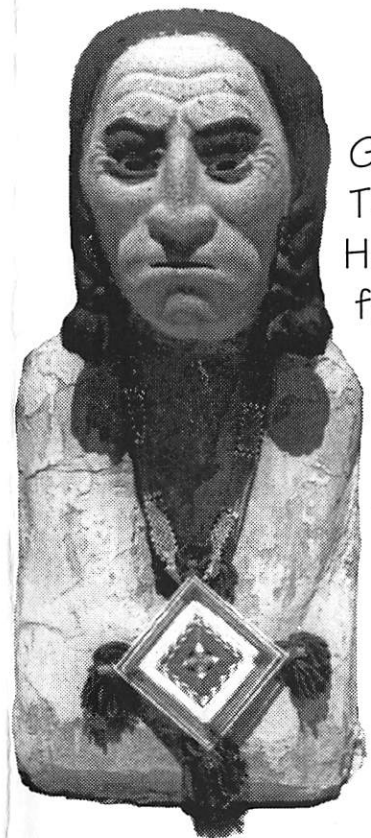
"It is amazing to see the contrasting colors and textures woven together creating a harmonic whole."

Background

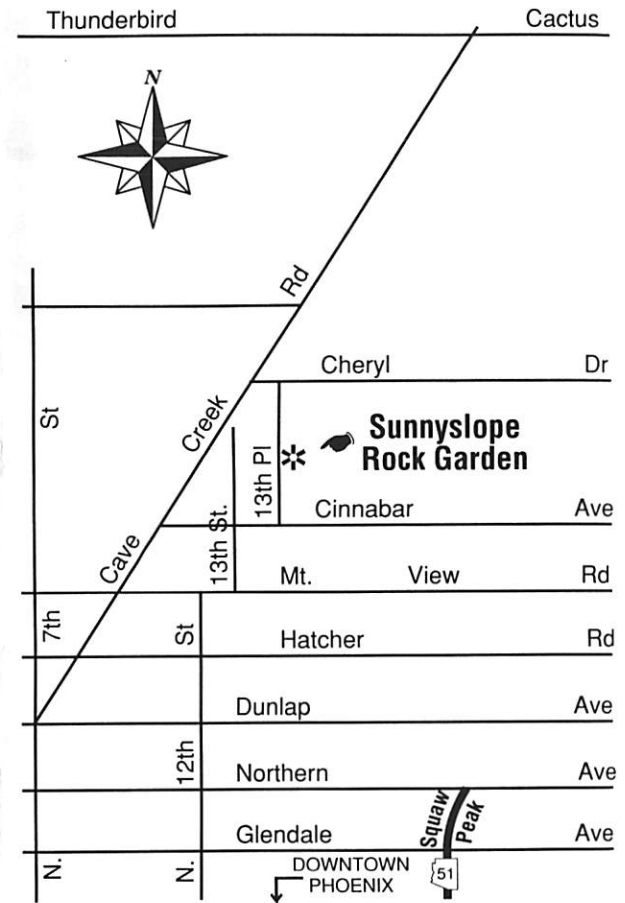
Born near Bend, Or., Thompson was a natural with people, his fiddle and

machines. Although later handicapped with the loss of fingers on his left hand, Thompson worked as an engineer. In the early 50's he and his wife Nancy retired to an unincorporated area north of Phoenix called Sunnyslope where he spent 22 years building his fantasy world. Since then, the Sunnyslope community has thought of Thompson as their folk hero.

Beatrice Moore
President, ARTLINK INC.,
producers of the
annual ART DETOUR



Grover Cleveland Thompson used Halloween masks from the 50's by pouring concrete into them - then building a body to hold them up. This is how he made people.



Travel Instructions

Traveling from the North or South I-17, exit I-17 at Dunlap and drive East to 7th St., where you can drive Northeast on Cave Creek Rd to Cinnabar.

Traveling from the Squaw Peak Parkway, exit at Glendale Ave. and go West to 7th St. where you turn North to Dunlap, where you pick up Cave Creek Rd. to Cinnabar.

OPEN: 1:00pm to 5:00pm
1st Sunday of each month