

RECOMMEND[®]

Florida

CORAL CASTLE GETS NATIONAL RECOGNITION

Coral Castle, a popular sightseeing attraction just south of Miami, and its creator, the late Edward Leedskalnin, have received signal recognition and national acclaim with the recent publication of two authoritative reference books.

One is the Reader's Digest's latest volume, "Treasures of America," a guide to this country's heritage of art and architecture, historic sites and engineering marvels.

Places are cited by Reader's Digest for "having a character and quality unlike those of any other place. They are a direct expression of the vitality derived from the blending of many peoples from many different countries and cultures."

An immigrant from Latvia, Leedskalnin created Coral Castle singlehandedly over 30 years. He said he knew the secrets used in building of the Pyramids of Egypt. Whatever the secrets of principles of construc-

dividual efforts which are created without precedence and without hesitation to use unorthodox means to signify a personal reality. The utter individuality of this art and the strong unquestioned spirit with which it was created is paramount in Leedskalnin's Coral Castle. His art carries with it an element of newness and discovery."

When the statistics on the Coral Castle are considered, it becomes apparent that it is a fine example of massive stone construction in the United States. A study of the immense sizes and weights of coral rock excavated, moved and used in its construction, in comparison with those used in many of the famous stone works around the world establishes it as an authentic "wonder of the world." The fact that it was accomplished entirely by one man makes it all the more remarkable.

Altogether there are about 1,000 tons of coral rock used in the cons-

SEE THE

**CORAL
CASTLE**

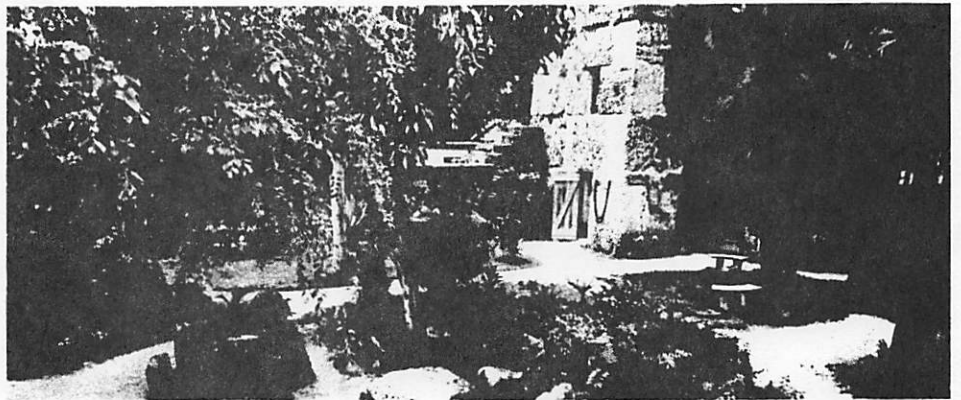
On U.S. #1

25 Miles South of Miami

ROMANTIC

BEAUTIFUL

UNIQUE



tion he used, they died with him when he passed away in a Miami hospital in 1951. It is said that his knowledge of the practical use of pulleys was not exceeded by the ancient Greeks or the Pyramid builders.

The second book just released is "Twentieth Century Folk Art and Artists." This colorful volume by Herbert W. Hemphill, Jr., and Julia Weisman, both associated with the New York Museum of American Folk Art, gives special prominence to Leedskalnin and Coral Castle.

The castle, with its dramatic coral carvings, is described as breathtaking in scope and imagination, remarkable for the skill and patience required.

Monica Wehrenberg, an expert in American Folk Art, has stated that "We call native or folk art those in-

struction of the walls and tower alone, a stupendous achievement for one man unequaled in history. In addition, more than 100 tons of coral rock were used in the carvings of the artistic objects throughout the castle.

The average weight of the stones Leedskalnin used is greater than the average stones used in the building of the great Pyramid of Giza while several of the stones are taller than those found in Stonehenge in England.

To visitors to Coral Castle, located on U.S. Highway No. 1 about 25 miles south of Miami, Leedskalnin's creativity is an achievement that touches even the most sophisticated.

Coral Castle is open 9 a.m. to 5 p.m. daily. Admission is \$2.50 per person with no charge for children to age 6.

Reprint from March issue of Recommend Florida