

RAY'S ORNAMENTAL GARDENS
STEPHENVILLE, TEXAS
Not an Area of Diamonds — But an Area of Ornaments

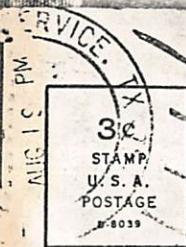
19 August

hi -
this is the last one that we've
visited & photographed - its only about
half here, cause since the guy (Ray)
died, cowboys have delighted on
Saturday nights to push them over
with the back of their pick-ups!

we've got 10 guys altogether, and
we've started to try to put the
pieces together - finding alot of
similarities, but also many unique
differences. I'm going to try to
work out a slide-lecture to give
you when i get back. Its all
pretty exciting - i think you'll
enjoy it -

see you sometime at the end
of September - with all the "fruits"
of knowledge!!!
jo fact

GENUINE CURTEICH-CHICAGO "G. T. ART-COLOR-TONE" GIANT POST CARD (REG. U. S. P.M. OFF.)



Giant Post Card

to the folks at:

Museum of Cultural History
Haines Hall. Rm. 55A
University of California
Los Angeles, California
90024